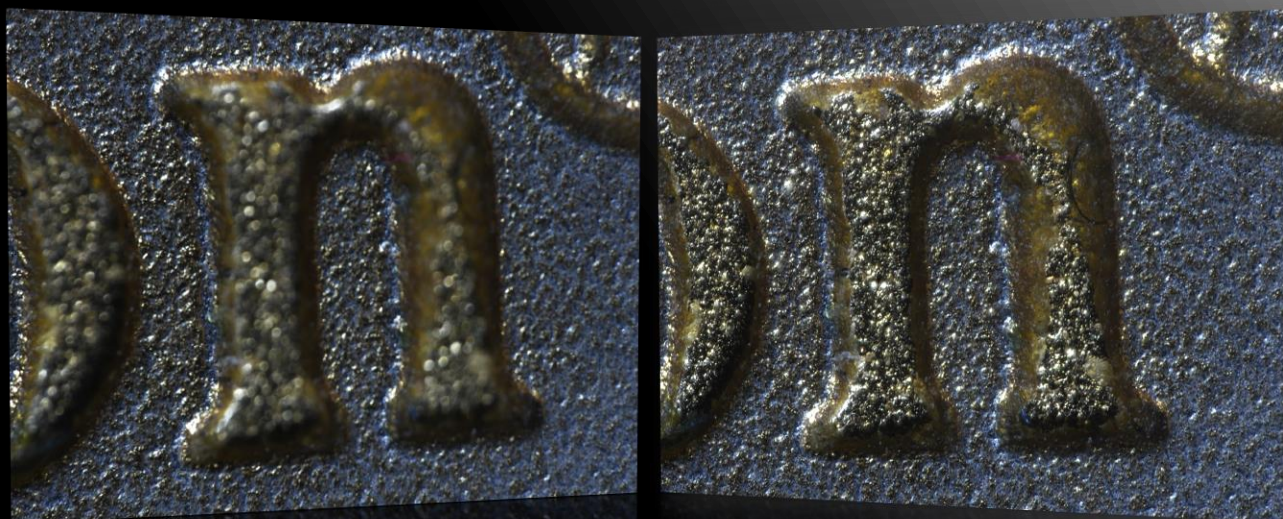


Extended Depth of Focus module

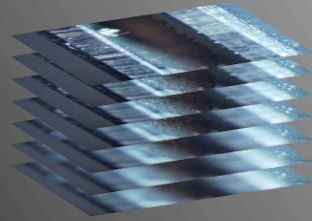


Discover more about
the complete solution
for **EDF** image
acquisition

➤ Z-stack based functions

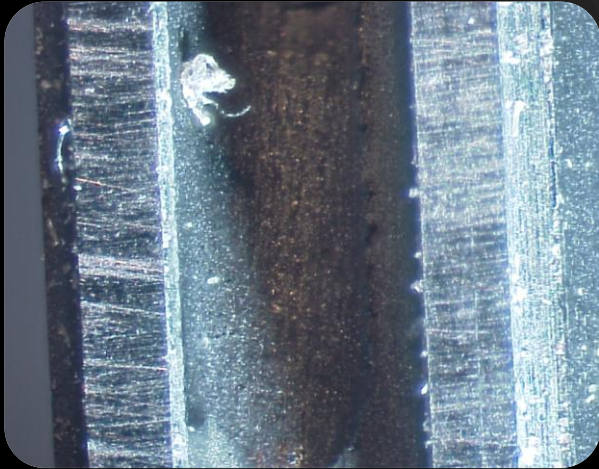
➤ Z-stack acquisition of 3D samples

- Fully automated (motorized) Z-Drive control
- Manual focus support

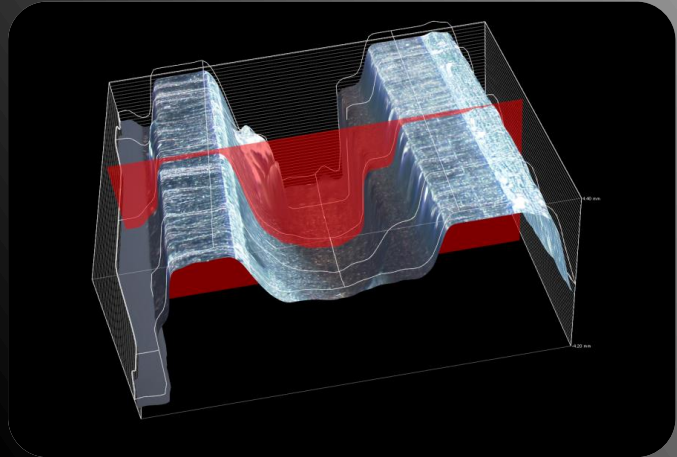


➤ Output

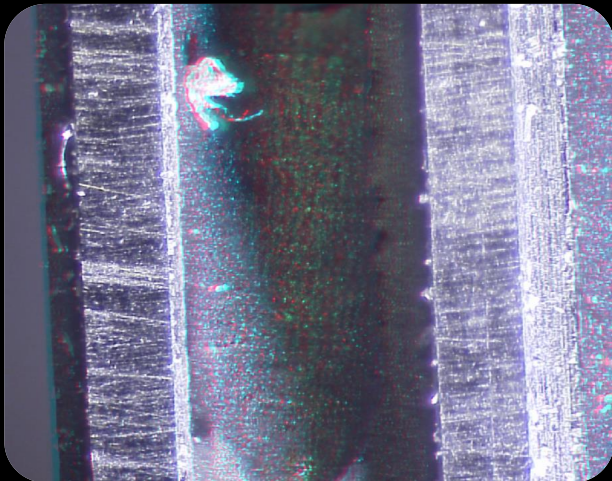
- Focused image



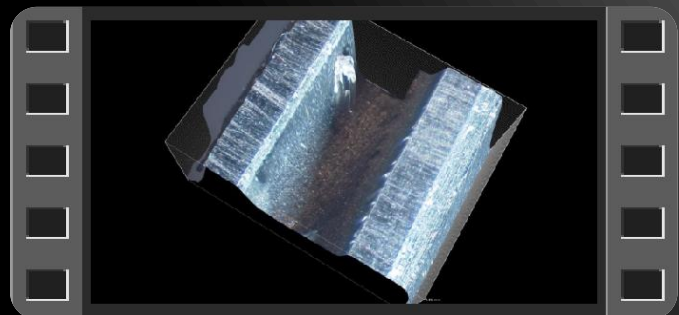
- Surface view



- Anaglyph

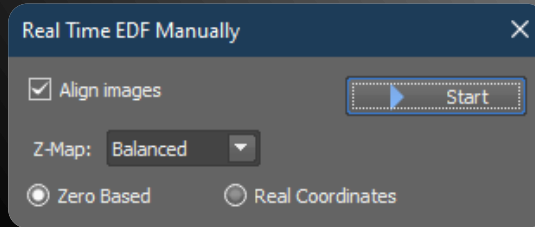


- Video



➤ Realtime EDF

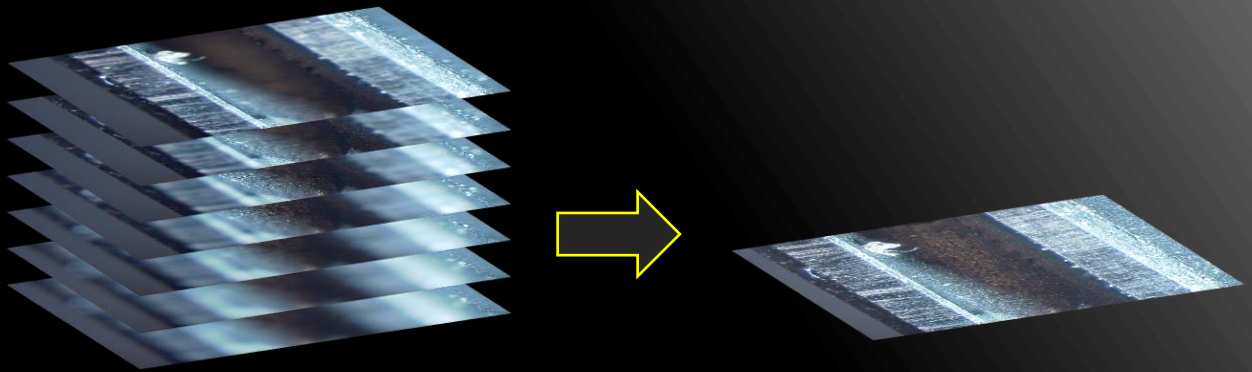
➤ Automatic sample alignment for stereo-microscopes



- Fully automated (motorized) Z-Drive control
- Manual focus support
- Z-Stack alignment (optional)

➤ Save disk space

- Acquire EDF image without storing Z-sequences

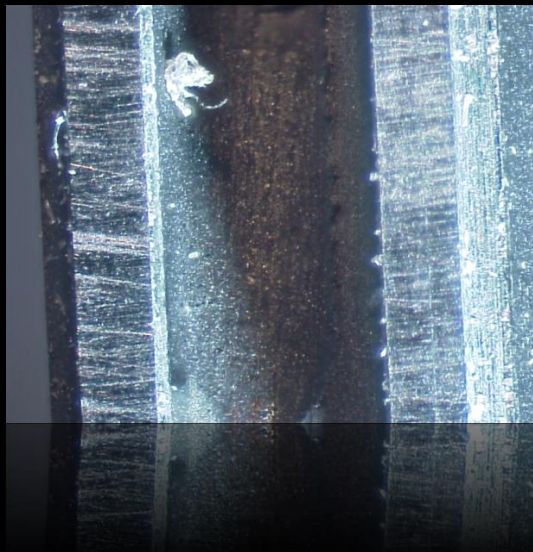


35MB

12MB

➤ Output

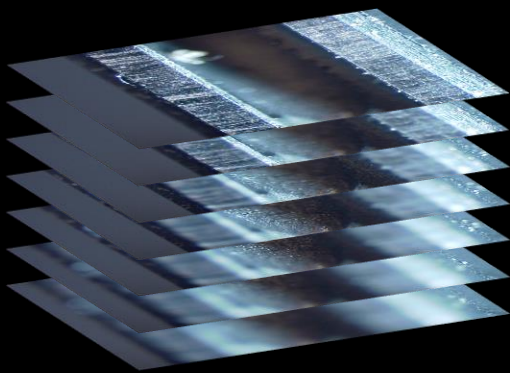
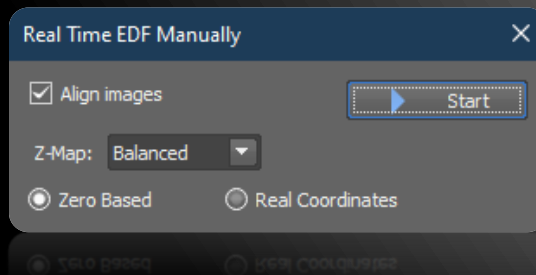
- Focused image



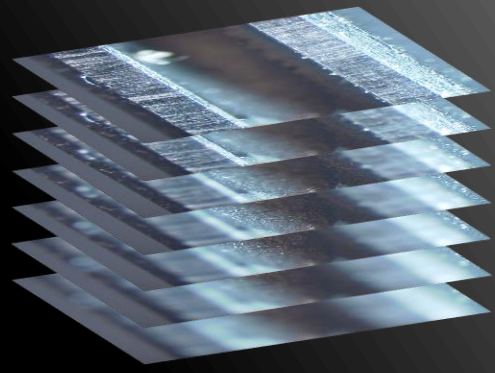
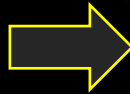
Z-stack alignment

➤ Available for Z-stack based and Real Time EDF

- Continuous live image alignment during acquisition
- Image Z-Stack sequence alignment capability
 - Parallax shift compensation for macro-optics and stereo-microscopes



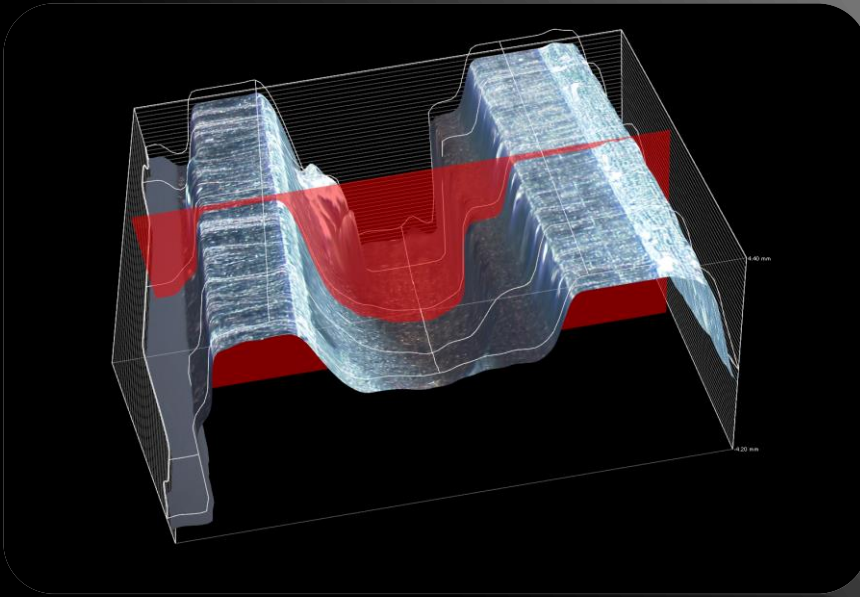
- Parallax shift



Aligned document

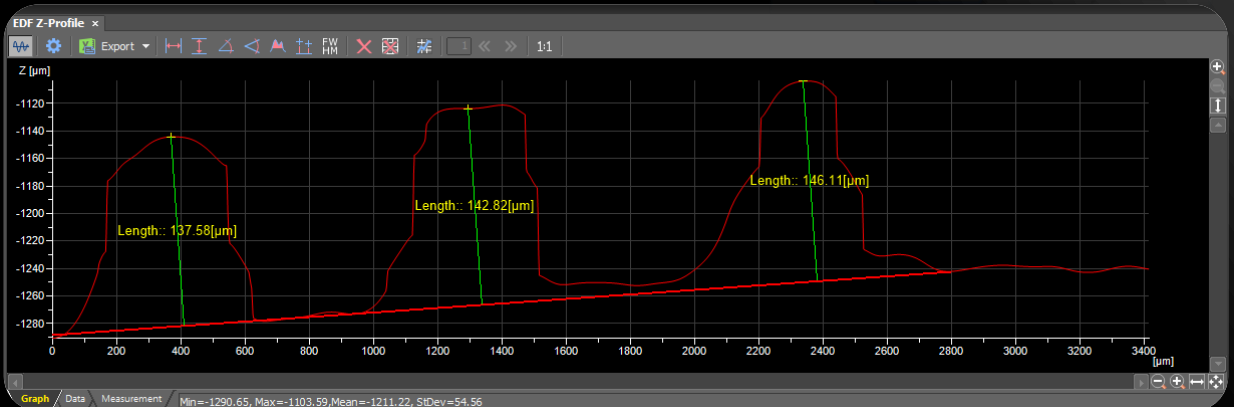
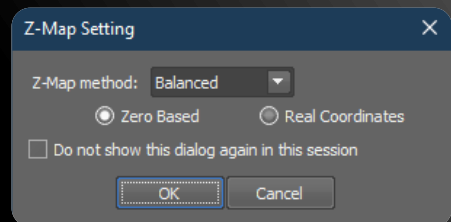
➤ Visualize your data using Surface view

- Based on Z-Map
- Display captured EDF Z-stack in 3D
- Inspect the samples, zoom in and out, crop or rotate
- Export to VRML and STL file formats
- View 3D exported files in 3rd party image viewers



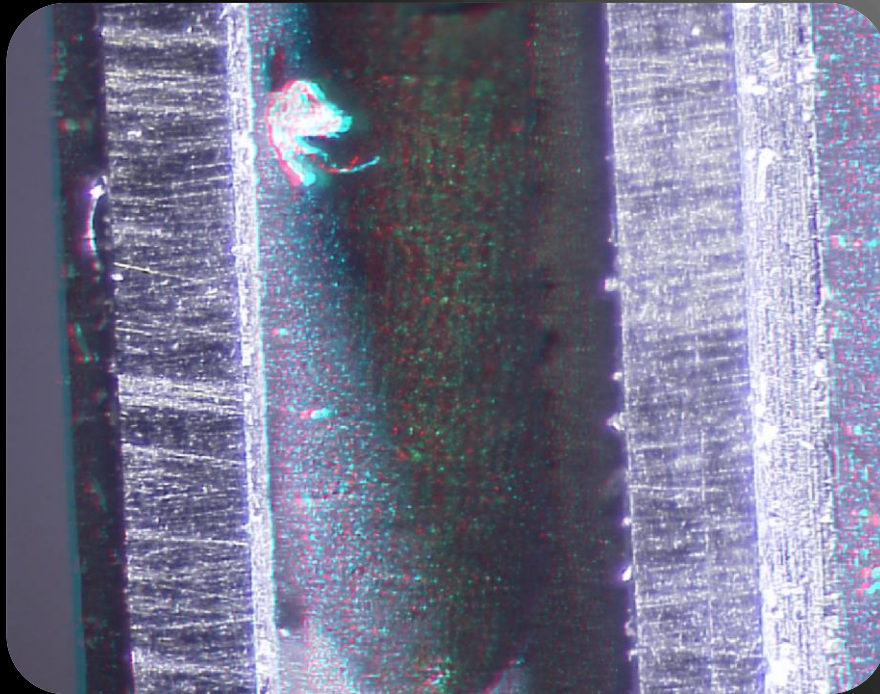
➤ Measurement in XYZ (3D)

- Profile measurement functions: distance, height
 - Zero-based
 - Coordinate based



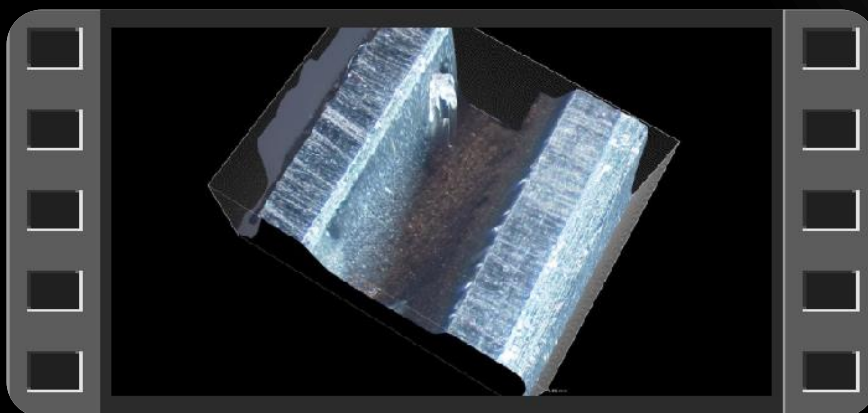
➤ View samples as 3D Anaglyph

- Present your samples in real 3D for better visualization
- Observe images in 3D using anaglyph glasses
- Save your anaglyph images, print them out and share with anyone

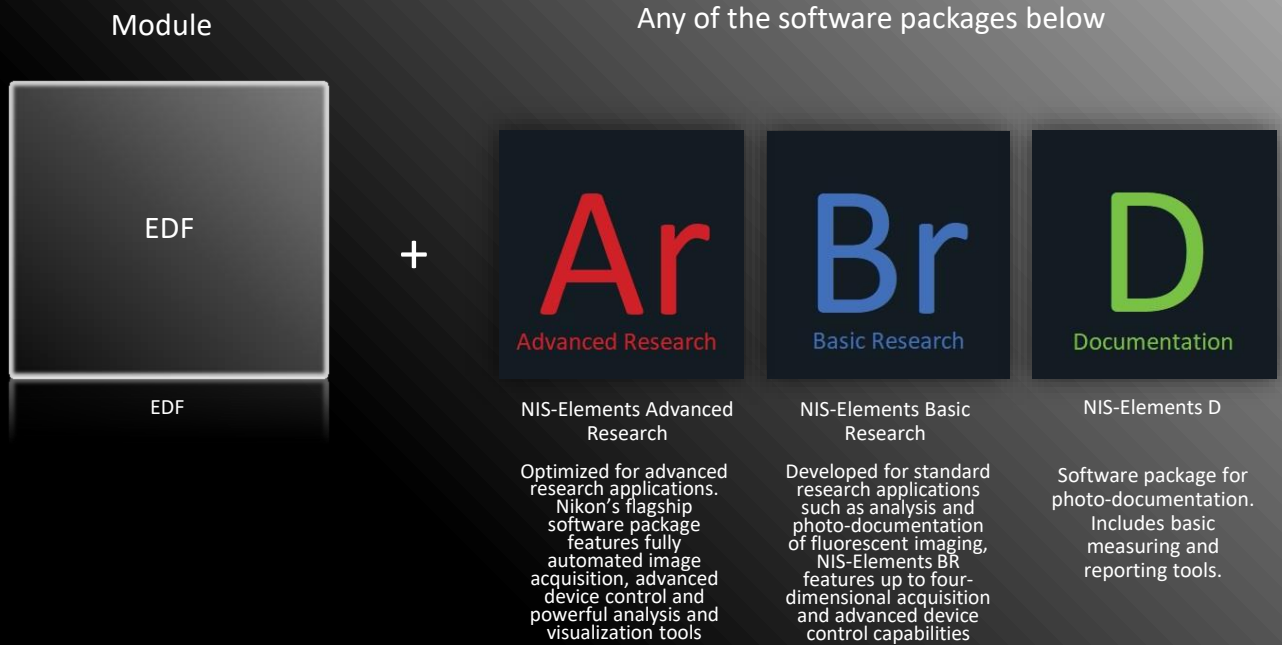


➤ Present your 3D samples virtually in video format

- Create short videos in Movie Maker
- Rotate, zoom in, focus on details to show on video
- Export videos in mp4 or avi formats



➤ Products required for this application



➤ Interested in finding out more about our product?

Please don't hesitate to contact us!

- Mail: lim@lim.cz
- Tel: +420 272 081 400
- Fax: +420 271 732 657

- www.laboratory-imaging.com
- © Laboratory Imaging s.r.o.

© Laboratory Imaging s.r.o.